

Minutes of the Brown University Community Council (BUCC) Meeting
Tuesday, October 15, 2019
4:00 – 5:30 p.m.

Members: President Paxson, Provost Locke, Russell Carey, Cass Cliatt, Al Dahlberg, Eric Estes, Kayla Rosen, Beverly Ledbetter, Lisa Di Carlo, Matthew Harrison, Justin Izzo, Jung-Eun Lee, Matthew McGarrell, Michael Gianatasio, Claire Heiden, Tenaya McCoy, Rachael Schmidt, William Zhou, Alastair Tulloch, Donnell Williamson, Heather Cole, Kim Departie, Joanne McEvoy, Ray Windsor, Olajumoke Akinsulire, Lauren Allister, Thano Chaltas, and Guy Sanchez were in attendance. Sarah Besky, Alla Hassan, Margaret Miller, Shipra Vaishnav, Nathan Blouin, Eloho Akpovi, Chloe Zimmerman, Meghan Admirand, and Shayna Kessel were unable to attend.

The minutes of the April 16, 2019 meeting were approved.

President Paxson began the meeting by providing updates on Brown's endowment, federal and legal issues facing higher education, faculty and alumni news. Brown's endowment return for FY19 was 12.4% as compared to a median return of about 6% for peer institutions. The endowment which now stands at \$4.2 billion funds 14% of the University's operating budget. President Paxson discussed the affirmative action case won by Harvard, Brown's participation in an amicus briefing urging the Supreme Court to uphold the DACA program and its engagement in advocating to reduce delays in processing visas and OPT applications. She discussed the National Labor Relation Board's move to reverse its ruling on graduate student unionization. She noted that the 2019 AAU Campus Climate Survey results came out today and new Title IX guidelines are expected later this fall. In her final update, President Paxson highlighted the recent accomplishments of Professor Vince Mor, Assistant Professor Eric Nathan, and alumna and astronaut Jessica Meir. President Paxson spoke about Brown's gift acceptance policy which is currently being reviewed in consultation with faculty and students. The policy is guided by several principles among which include: gifts are given without any quid pro quo; gifts will not be accepted if they compromise the academic freedom of the University community; and the acceptance of a gift does not imply or mean the University endorses or approves the donor's views, opinions, businesses, or activities.

President Paxson introduced the presentations on Brown's commitment to Providence schools by speaking about the devastating findings in the John Hopkins report on the Providence Public School District that led to a state takeover of the city's schools. Brown is committed to being more strategic and focused in its engagement with Providence Public Schools, and is coordinating with the Rhode Island Department of Education and PPSD to develop a partnership program with two schools. It is also working to strengthen college access pathways for PPSD students through the Brown summer program and in collaboration with Community College of Rhode Island. The Annenberg Institute will assist by providing research on issues that will help inform the PPSD's decision-making process. Al Dahlberg, Vice President for Government and Community Relations, spoke about the initiative of the Urban Innovation Partnership for its member institutions to review their current support of the Providence Public Schools in order to better coordinate and align with the needs of the schools. Ellen Viruleg, Managing Director of the Annenberg Institute, gave a brief history of the Institute which is now led by Susanna Loeb. Its

mission is centered on improving education opportunities for children. The Institute has three strategic pillars which complement and support each other: harnessing the power of Brown's community; partnering for learning and local impact; and advancing the broader field. Annenberg creates local partnerships that improve the quality of schools and experience of students while producing nationally impactful research. It also coordinates Brown's reach and impact on local education. Betsy Shimberg, Assistant Dean of the College for Community, Engaged Co-Curriculum and Director of Student Development, and Ashley Greene, Associate Director, Community Partnerships, gave an overview of the Swearer Center. The Center is committed to long-term reciprocal community relationships built on respect and collaboration in teaching and learning. Swearer programming in the PPSD is comprised of Community Corps, Bonner Community Fellowship, VISTA Fellows Program, and Engaged Scholar Practicum placements. BEAM (Brown Elementary Afterschool Mentoring) with 100 Brown students is the largest of the Community Corps. It provides afterschool programming at William D'Abate Elementary in inner-city Providence in a community partnership with ONE Neighborhood Builders. Following the presentations there was discussion with and among the members of the Council and audience members.

The next meeting of the Brown University Community Council will be held on Wednesday, November 20 from 4:00 – 5:30 pm in the Stephen Robert '62 Campus Center, Kasper Multipurpose Room.

Respectfully submitted,

Catherine Pincince
Secretary of the Brown University Community Council

Brown University Community Council
Tuesday, October 15, 2019
4:00 – 5:30 pm
Stephen Robert '62 Campus Center, Kasper Multipurpose Room

Agenda

1. Approval of Minutes of April 16, 2019 Meeting
2. Report of the President
3. Brown's Commitment to Providence Schools
Ellen Viruleg, Managing Director at the Annenberg Institute for School Reform
Al Dahlberg, AVP for Government and Community Relations
Betsy Shimberg, Assistant Dean of the College for Community, Engaged Co-Curriculum and Director of Student Development
Ashley Greene, Associate Director, Community Partnerships
4. Open Time for University Community Members to Present Broad Campus Issues to the Council

An Introduction to Annenberg Institute

Brown University Community Council

October 15, 2019



ANNENBERG
BROWN UNIVERSITY

Annenberg's mission continues to center on improving education opportunities for children



Ted Sizer
Former and Founding Director



Warren Simmons
Former Director



Susanna Loeb
Director, Annenberg Institute

Annenberg has three strategic pillars



**Harnessing the
power of Brown's
community**

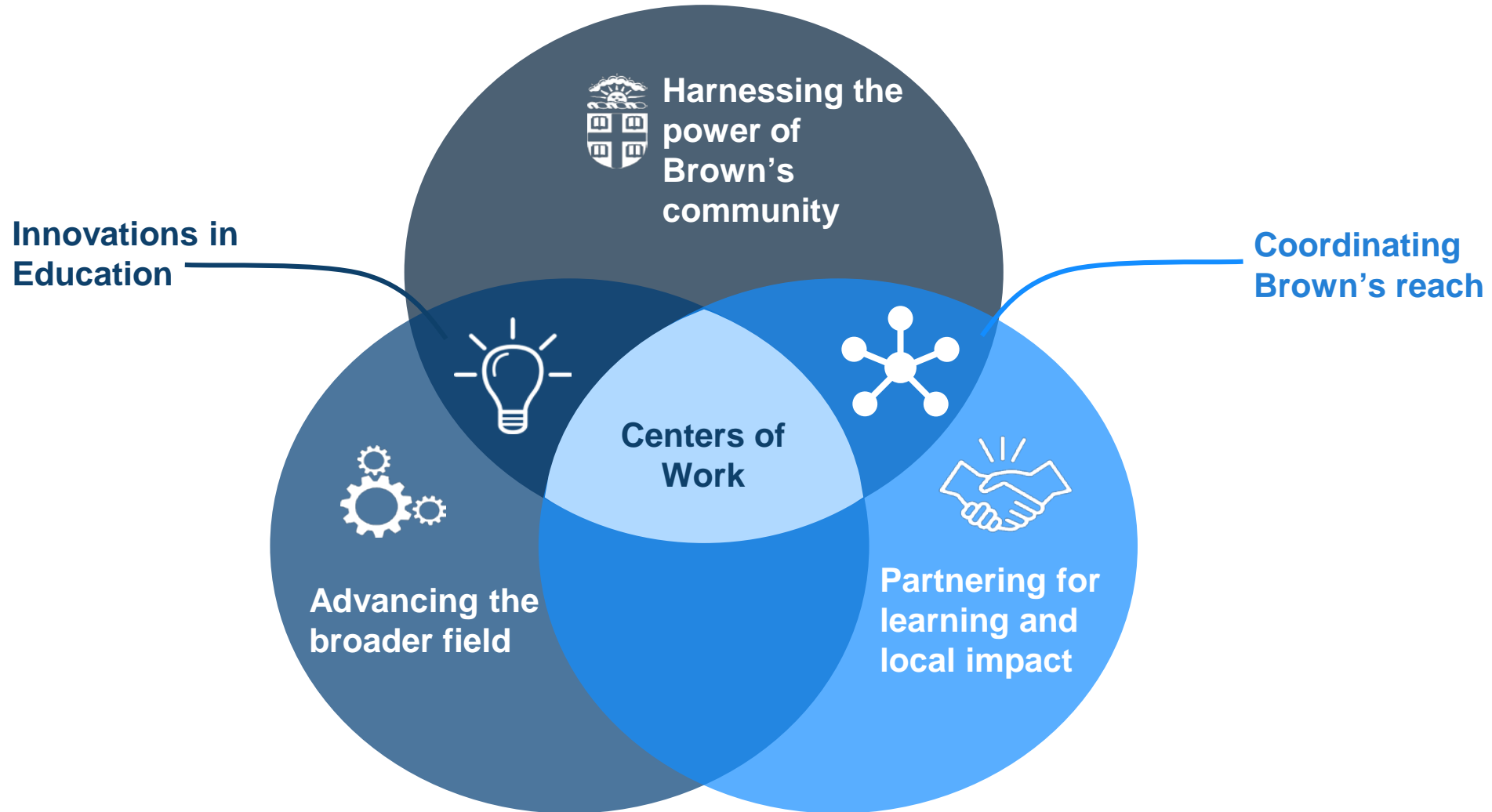


**Partnering for
learning and
local impact**



**Advancing
the
broader field**

These pillars complement and support each other



Our local partners generate knowledge to inform local decisions



Generate evidence for local decision-making



Increase improvement capability within specific areas of focus



Build tools that embed data and evidence in routine practice



Create a long-term partnership that improves the quality of schools and the experiences of students while producing nationally impactful research

We work with local nonprofit and schools to coordinate Brown's reach and impact on local education

Annenberg also helps to coordinate the education opportunities for students, faculty, and staff on Brown's campus to help local schools and children



Develops and implements **partnership opportunities** between local schools and nonprofits and Brown students and campus community members



Regularly **collect and disseminate information** on University initiatives, faculty projects, and student group activities related to K-12 education



Soljane Martinez
Education Coordinator
soljane_martinez@brown.edu
(401) 863-2469

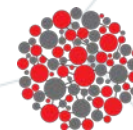
Swearer Partnership Philosophy

Community Agency and Reciprocity

- Partners determine how and when we engage
- Network of partners creates opportunities for coordination, collaboration, best practice sharing
- Multi-year partnerships
- Partners serve as co-educators and co-investigators

Partnership by the Numbers AY 2018-19

- ~80 Partners in 5 Issue Areas
- 23 Bonner Partners
- 12 Community Corps Partners
- 21 iProv Partners
- 23 Off-Campus Work-Study Partners



SWEARER CENTER
community. scholarship. action.
BROWN UNIVERSITY

Swearer Programming in PPSD

◎ **Community Corps**

- 580 Brown students per semester and 700+ per year
- 2/3 serving PPSD students
- 2-4 hours per week, minimum of one semester

◎ **Bonner Community Fellowship**

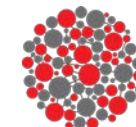
- 130 Bonner Fellows, 49 serving PPSD students (38%)
- 8-10 hours per week, all four years

◎ **VISTA Fellows Program**

- 7 of 16 VISTA Fellows provide capacity-building to support partner organizations that work with PPSD K-12 students

(PASA, Generation Citizen, Beat the Streets Providence, Breakthrough Providence, College Advising Corps, Inspiring Minds, ONE Neighborhood Builders - D'Abate Community School)

◎ **Engaged Scholar Practicum placements**



SWEARER CENTER
community. scholarship. action.
BROWN UNIVERSITY

Community Corps

Community Corps Groups Engaging in Providence Public Schools Sept 2018-May 2019			
Community Corps student groups in schools	Community Partner	Site	Total Brown Students
BEAM (Brown Elementary After-school Mentoring)	ONE Neighborhood Builders	William D'Abate Elementary	140
OLEEP (Outdoor Leadership and Environmental Education Program)	MET School	MET High School	24
Brown SAT Prep	College Advising Corps	Multiple high schools	35
SHAPE (Sexual Health Advocacy through Peer Education)	Planned Parenthood	MET High School	41
STEMS (after-school) (Swearer Tutoring and Engagement in Math and Science)	Providence Afterschool Alliance	Hope High School	40
STEMS (in-school) (Swearer Tutoring and Engagement in Math and Science)	Mentor RI	Hope High School	60
Swearer Classroom Program	Inspiring Minds	D'Abate and Fogarty Elementary Schools	75
TOTAL IN SCHOOLS			415

FALL EVENTS COMMUNITY CORPS



SWEARER CENTER
BROWN UNIVERSITY

Members of Community Corps are required to participate in at least two workshops each semester.
For more information and to RSVP, visit <http://bit.ly/Comm-Corps>

FALL COMMUNITY CORPS ORIENTATION

**SEPT
23/4**

NEW Community Corps students
**6-8:30 p.m., BERT Room 130 (Sept 23)
Salomon Room 001 (Sept 24)**

Required orientation will include discussion of program expectations, community engagement, healthy boundaries and the Swearer Center.

Make up: Oct. 2 from 6-8:30 p.m., Swearer Center

**SEPT
25**

RETURNING Community Corps students
6-8:30 p.m., BERT Room 130

Returning members will discuss program expectations and engaged scholarship and reflect on their previous engagement.

Make up: Oct. 2 from 6-8:30 p.m., Swearer Center

COMMUNITY CORPS WORKSHOPS

For locations, check BrownEngage events page at <http://bit.ly/Comm-Corps>

**OCT
10**

**Asset-Based Community Engagement
6:30 p.m.**

An exploration of asset mapping and tools to implement this practice into community engagement sites.

**OCT
23**

**What's Next for Providence Schools?
6:30 p.m.**

A discussion of the review of the Providence Public School District by the Johns Hopkins Institute for Education Policy, which led to the state takeover of the district. Co-sponsored with the Annenberg Institute for School Reform.

**NOV
7**

**Let's Talk About the White Savior Complex
6:30 p.m.**

Students will participate in peer-led conversations to critically examine identities and community engagement.

**NOV
13**

**Nonprofit Fundamentals
6:30 p.m.**

In small groups, Swearer Center community partners will discuss the components of nonprofit management, including governance, fundraising, and programming.

**NOV
21**

**Reflecting on Social Change: Alumni in
Public Service 6:30 p.m.**

A panel of Brown alumni who are working with nonprofit and government organizations will reflect on their undergraduate and professional experiences. Co-sponsored with the CareerLAB and Careers in the Common Good.

**DEC
3**

**Storytelling
6:30 p.m.**

An opportunity for students to deepen their narrative skills and practice storytelling as a means to enact meaningful change. Joint workshop with Bonner Community Fellows.

Additional Opportunities

Note: Community Corps members may attend one of the following opportunities and write a BrownEngage reflection in place of one workshop.

- Swearer Center Walking Tours, September 7 at 10 a.m. and 1 p.m. (see <http://bit.ly/SwearerEvents> for details)
- *Rigged: The Voter Suppression Playbook*, film screening and panel discussion October 17 at 6:30 p.m. (see BrownEngage for details)
- MPC workshop (calendar found at brown.edu/go/ebulletin)

2015-16 Assessment of D'Abate Elementary After-school Program (BEAM)

Performance

- Participating students scored about 10 points higher on the math exam
- Participating students scored about 17 points higher on the reading exam.
- Participating students in grade 1 scored significantly higher on the math exam, with an estimated mean difference of 93 points

Attendance

- Participating students had higher attendance percentages and less absenteeism compared to non-participating students.
- Participation in the after-school programming was significantly associated with higher school attendance.

